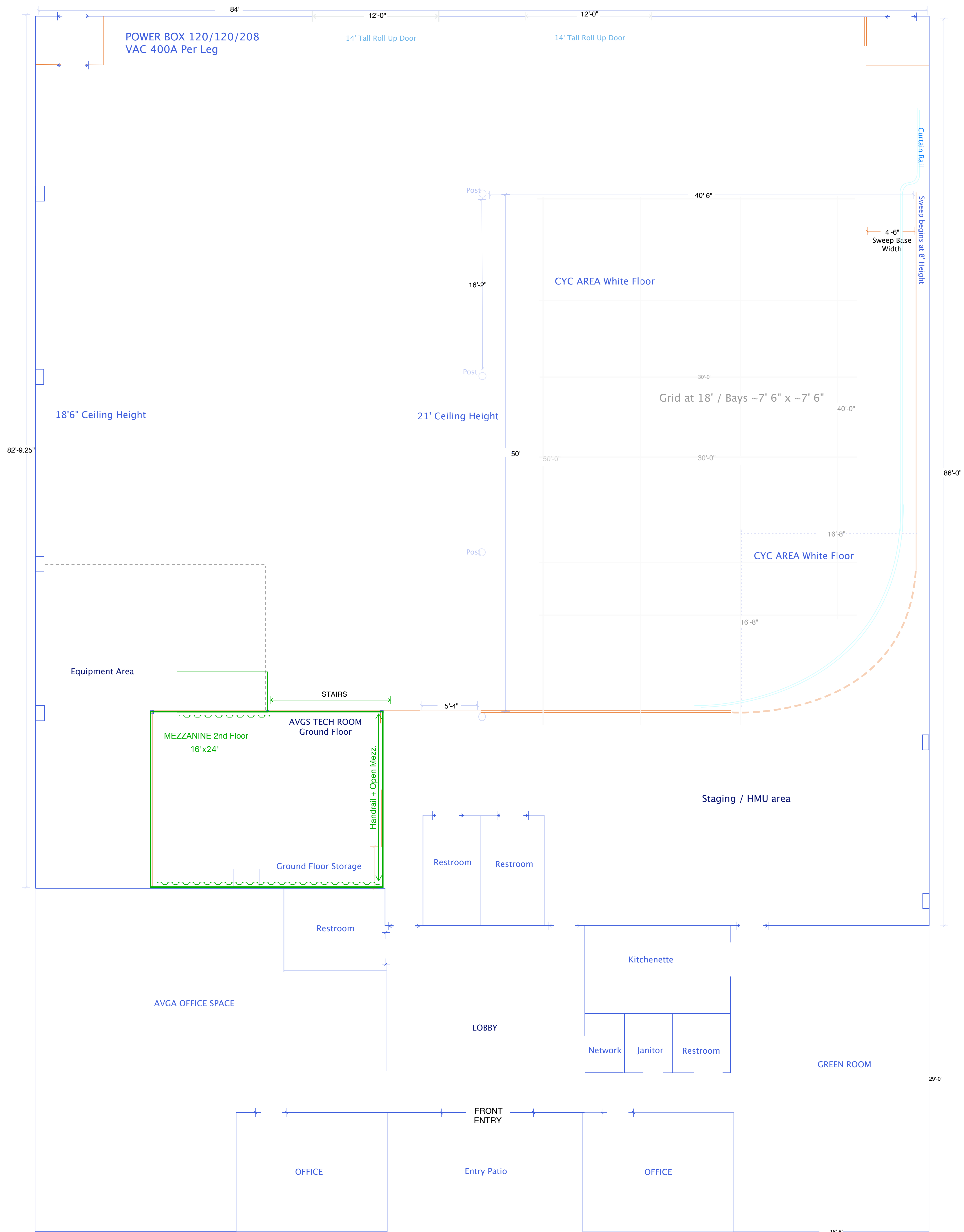


DRIVEWAY

PARKING - 24/7 access - overnight allowed

DRIVEWAY



A Very Good Space - Van Nuys

**Stage Specs**

- 84'x 65' Air Conditioned Stage
- 3,500 sq ft. of Production Office / HMU / Staging Area
- 40' x 50' White Cyc (Drive-on OK)
- 18'6" - 21' Ceiling Height
- 18' Pipe Grid
- 12' x 12' Softbox w/White Quasar and 12x Astera Hyperion Lighting (removable)
- 2 x 14' Tall x 12' Wide Loading Doors
- Pre-Hung Retractable 100' x 17.6' Green Chroma Key Curtain
- Pre-Hung Retractable 100' x 17.6' Black Curtain
- Insul-Quilt Acoustic Baffling
- 1200 amps 120/120/208 Vac Camlock Power
- 25 Parking Spaces w/ Overflow Parking Available

**Production Support**

- Ncam Mk II Reality System
- Ultimatte 12 w/Smart Remote
- On-site Grip, Electric, Lighting
- 4k/HD Streaming Package
- Camera Packages and Support
- Event and Playback Audio System
- 2x Scissor Lifts
- Large Green Room w/Kitchenette
- Open Areas and Soft Seating
- On-stage Mezzanine w/Lounge Seating
- Folding Tables and Chairs

**Contact**

15757 Stagg St.  
 Van Nuys, CA 91406  
 www.averygoodspace.com  
 info@averygoodspace.com  
 747.264.1413

Visit our website or call for additional information.