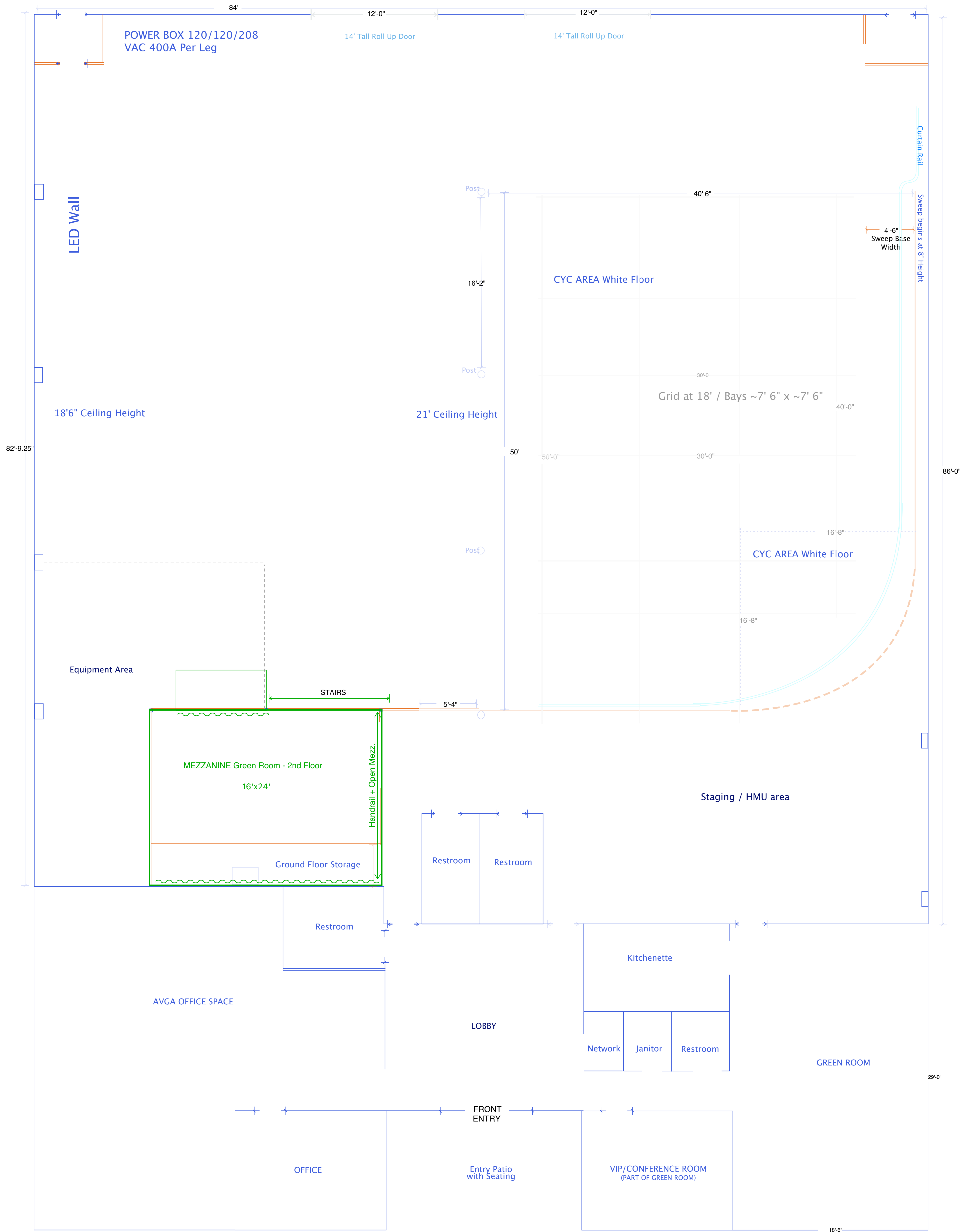


DRIVEWAY

PARKING - 24/7 access - overnight allowed

DRIVEWAY



Stage Specs

- 84'x 65' Air Conditioned Stage
- 3,500 sq. ft. of Production Office / HMU / Staging Area
- 40' x 50' White Cyc (Drive-on OK)
- 18'6" - 21' Ceiling Height
- 18' Pipe Grid
- Pre-Installed RGBw+ Lighting Volume
- 12' x 20' Truss Softbox w/2x LiteGear Auroris X System
- Installed LumenRadio Stardust Wireless DMX
- 2 x 14' Tall x 12' Wide Loading Doors
- Pre-Hung Retractable 100' x 17.6' Green Chroma Key Curtain
- Pre-Hung Retractable 100' x 17.6' Black Curtain
- Insul-Quilt Acoustic Baffling
- 1200 amps 120/120/208 Vac Camlock Power

Production Support

- On-Site Grip, Electric, Lighting
- 4k/HD Streaming Package
- Camera Packages and Support
- 8-Speaker QSC Event/Playback Audio System
- Dedicated High-Speed Fiber Internet
- Ncam Mk II Reality System
- Ultimatte 12 w/Smart Remote
- Double Green Room w/Kitchenette, Private Bathroom and VIP Room
- Mezzanine Green Room w/Soft Seating
- Dedicated HMU and Wardroom Areas
- 2x Scissor Lifts
- Ample Parking with Easy Truck Access

Contact

15757 Stagg St.
Van Nuys, CA 91406
www.averygoodspace.com
info@averygoodspace.com
747.264.1413

Visit our website or call for additional information.